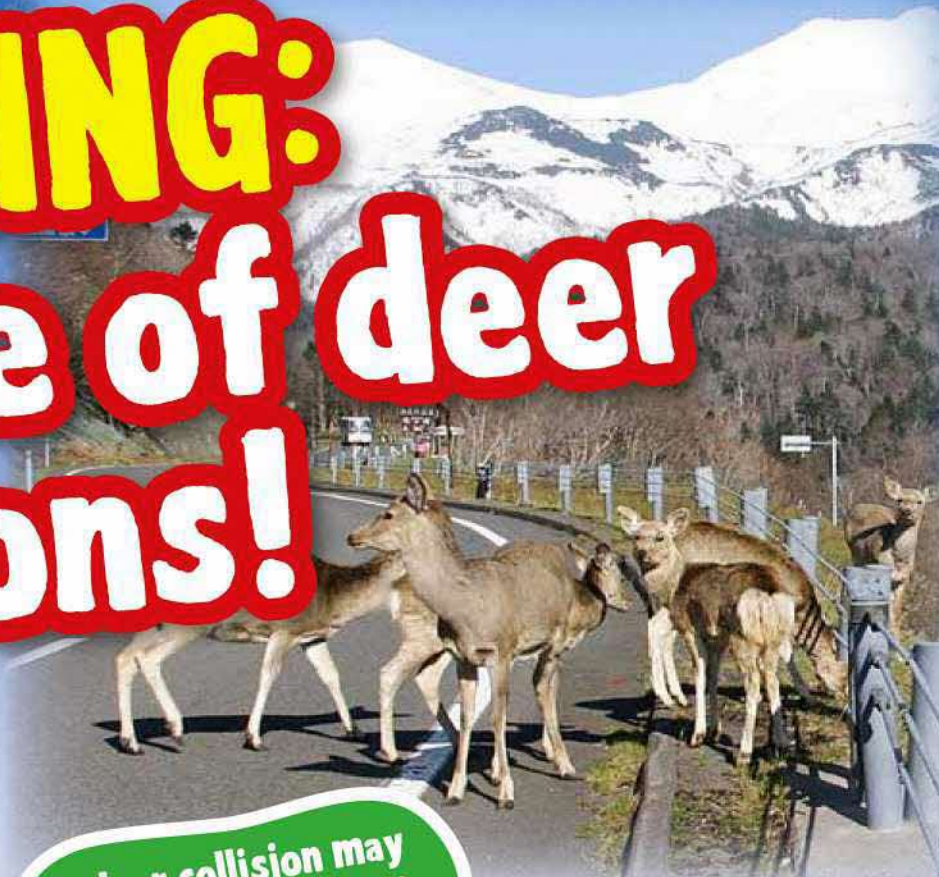


WARNING: Beware of deer collisions!



Deer may suddenly jump in front of you! Slow down, watch ahead carefully!



Important points to avoid a deer collision

Know deer behavior and drive safely!

If you see one deer, expect and beware of a second one!

Deer tend to move in herds.

Be especially careful when driving in the evening!

Many accidents occur between 4 and 8 p.m. Light shining on deer illuminates their eyes. If you see glowing eyes in the dark, there may be deer near you!

Deer are clumsy on roads.

They tend to slip on asphalt and may fall down when hurrying. They may stop in their tracks in response to car lights and driving sounds.

Be careful of roadside forests!

Roads running through forests are part of their territory. Deer may jump out!

Roads are part of the deer territory.

The 5 municipalities with the most deer collisions in 2022

Municipality	Number of collisions
Tomakomai	366
Kushiro	226
Chitose	154
Sapporo	120
Shibecha	106

Source: Hokkaido Prefectural Police Headquarters website

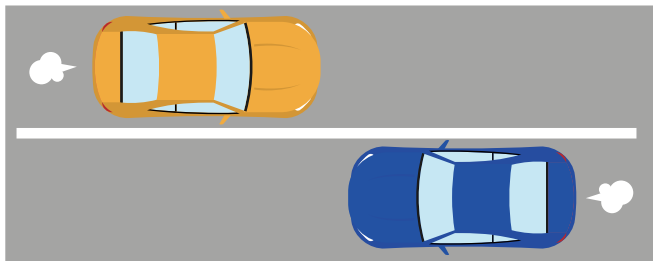
Produced by the Hokkaido Regional Development Bureau, Ministry of Land, Infrastructure, Transport and Tourism



Information to tourists-Know Japanese traffic rules to enjoy sightseeing in Hokkaido!

Japanese traffic rules

1. Japan has a left-hand traffic system. Be careful not to drive on the right side.



2. Stop at a red light unless there is a green arrow.



3. Stop before the stop line at an intersection with a "stop" sign. Note: "Stop" does not mean "give way" in Japan.



To drive safely in Hokkaido

Drive slowly!

Hokkaido covers a vast area with long roads that connect cities.

Although these roads generally have wide traffic lanes and few traffic lights in the suburbs, do not exceed the maximum speed limits. Remember,

by driving slowly you have the benefit of viewing Hokkaido's beautiful landscapes longer!



Beware of slipping in winter!

When driving on icy or snowy roads, the stopping distance can be about 10 times that on dry roads.

Sudden actions often cause loss of control over a vehicle.

Slow down and keep a safe distance!

